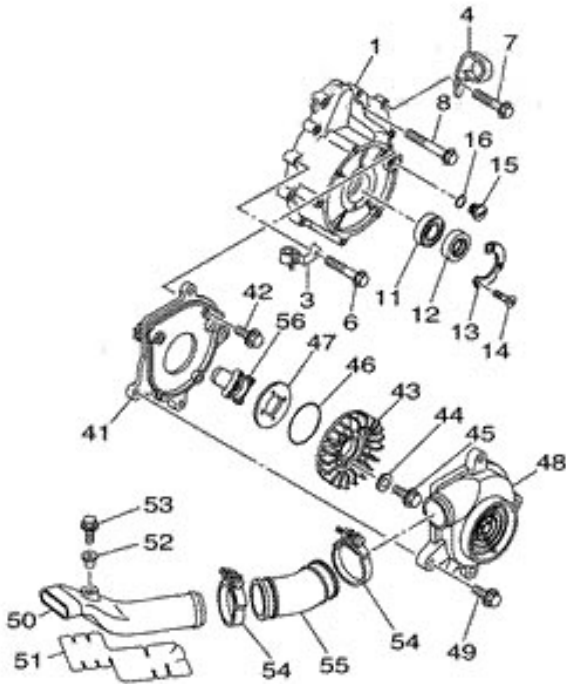


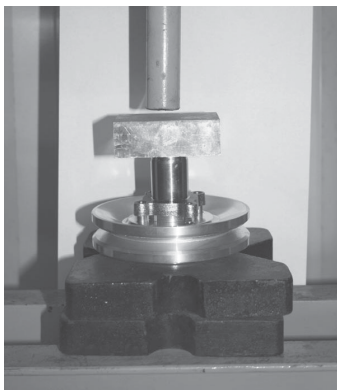


## RHINO INSTRUCTIONS

- 1** This kit can be installed without removing the gas tank, however removal of the tank will make the installation easier.
- 2** Remove seats and center console.
- 3** On passenger side of engine remove blower assembly, items 41-56. (See diagram)



- 4** Install billet pulley onto starter pulley boss (#56), this will require the use of a press. (See photo). After the boss and pulley have been pressed together thread the 6mm bolts thru pulley to ensure proper alignment of the pulley onto the boss. Remove 6mm bolts.



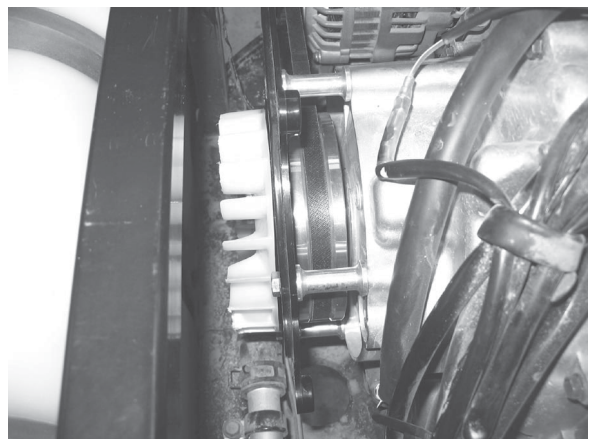
- 5** Install billet pulley and boss back onto engine. Torque bolt (#45) to 40 ft lbs. Loop belt over pulley. (See photo)



- 6** Install air shroud (#41) back onto engine using the three provided standoffs and bolts. You will need to drill a hole thru the air shroud (#41) for the top bolt and standoff. This only needs to be done on the top most hole. (See photo)

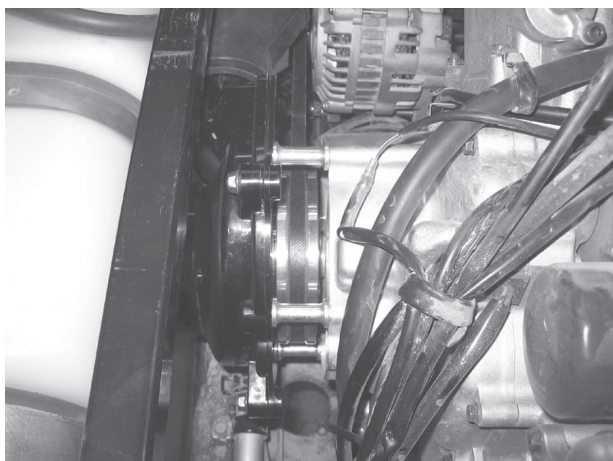


- 7** Reinstall plate (#47), o-ring (#46), and fan (#43) onto pulley using the bolts provided. (See photo)





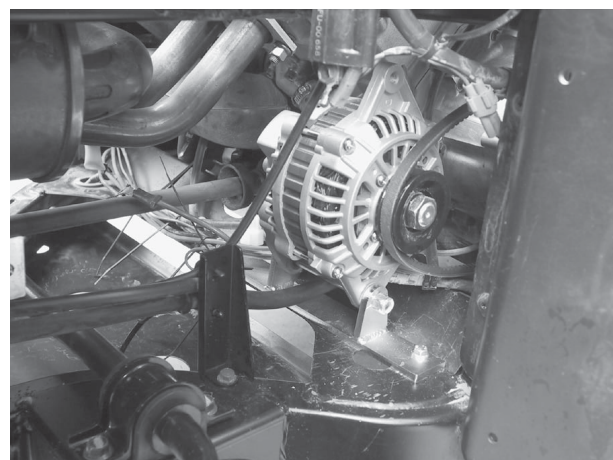
- 8** Reinstall air shroud cylinder (#48) back onto air shroud (#41). (See photo)



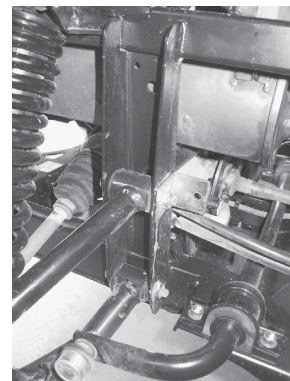
- 9** Install alternator bracket using the three bolts provided. Note that two of three bolts will need a nut on the bottom side. The third bolt threads into the frame. (See photo)



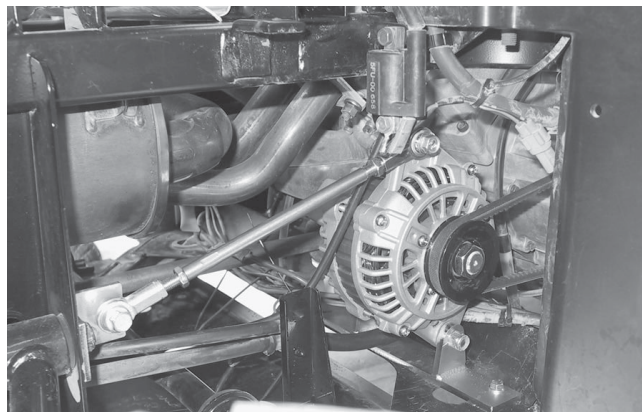
- 10** Mount the alternator to the bracket using the two bolts provided. Leave these bolts loose until the final belt adjustment is made. Loop belt over alternator pulley. (See photo)



- 11** Mount L bracket to upper a-arm bolt. (See photo)

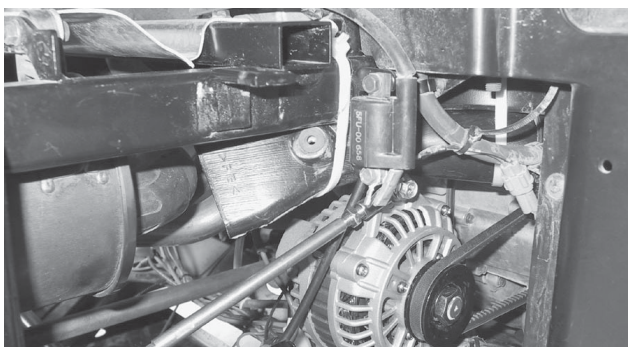
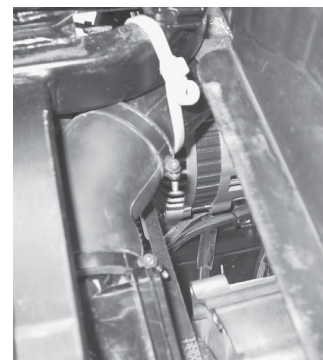


- 12** Install the provided tie rod assembly. Note that one side of the tie rod has a wrench flat on it. Mount this side closest to the L bracket. This will be used to tighten up the belt. (See photo)



- 13** Using a 9mm wrench turn the tie rod to pull tension on the belt. Do not over tighten the belt. Now tighten the two 3/8" bolts holding the alternator to bracket and ensure that all other hardware has been secured.

- 14** Reinstall the air duct assembly (#50), and (#55). Note that the bolt the holds the air duct to the frame will no longer be used and the air duct will sit at a different angle than stock. Use the provided cable ties to secure the duct to the frame ensuring it is not touching the belt. (See photos).

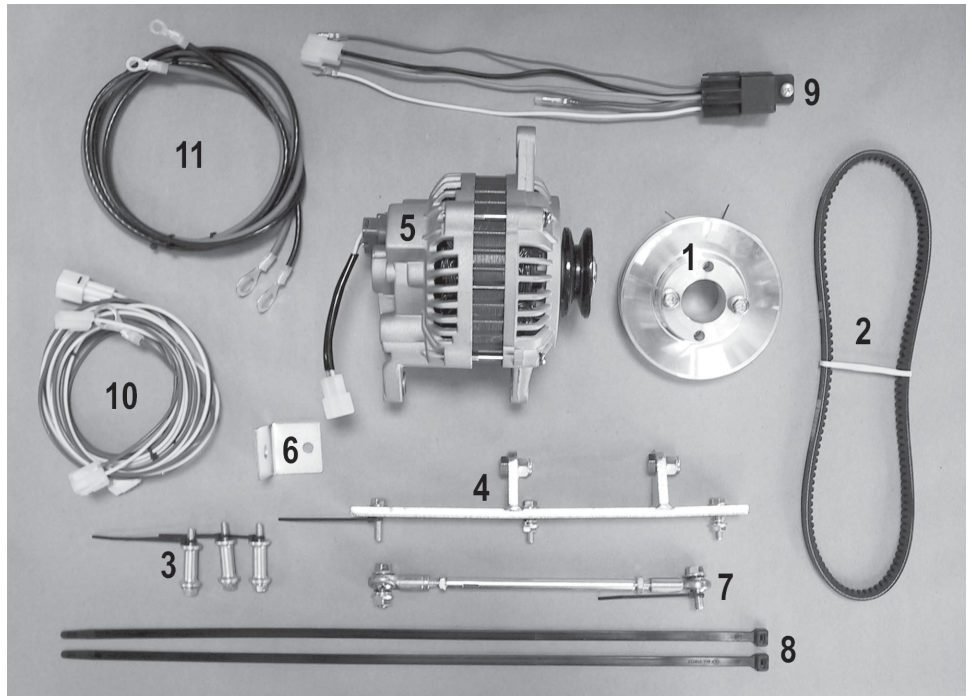


**15** Now it is time to wire up the kit. As you know the kit did not include a battery. We suggest you purchase an automotive style battery and run all of your additional electrical accessories off of this battery. We have provided a wiring kit to charge the secondary battery. We have also provided a schematic to help you wire up the kit.

**16** The kit includes a relay that we suggest you mount inside the stock battery box along with the other relay and fuses.

**17** There is also an adaptor plug included in the kit that plugs into the back of the stock light switch. Locate the back of the stock light switch and unplug the connector feeding the switch. Insert our plug in between the switch and the stock wiring harness.

**18** Refer to the schematic for the remaining wiring.



- |                             |                           |                          |
|-----------------------------|---------------------------|--------------------------|
| <b>1</b> Pulley             | <b>5</b> Alternator       | <b>9</b> Relay           |
| <b>2</b> Belt               | <b>6</b> L Bracket        | <b>10</b> Wire Harness   |
| <b>3</b> Standoffs          | <b>7</b> Tie-rod Assembly | <b>11</b> Battery Cables |
| <b>4</b> Alternator Bracket | <b>8</b> Cable Ties       | <b>12</b> Instructions   |

# Rhino Wiring Schematic

